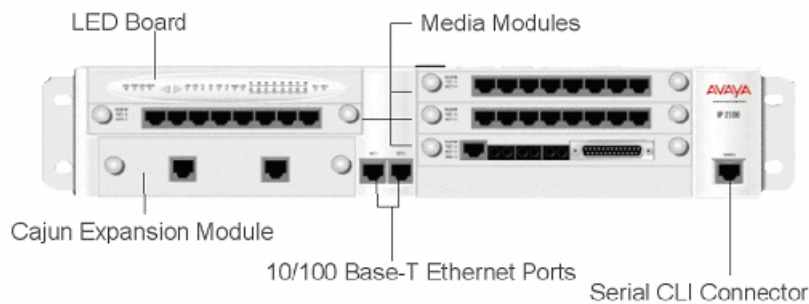
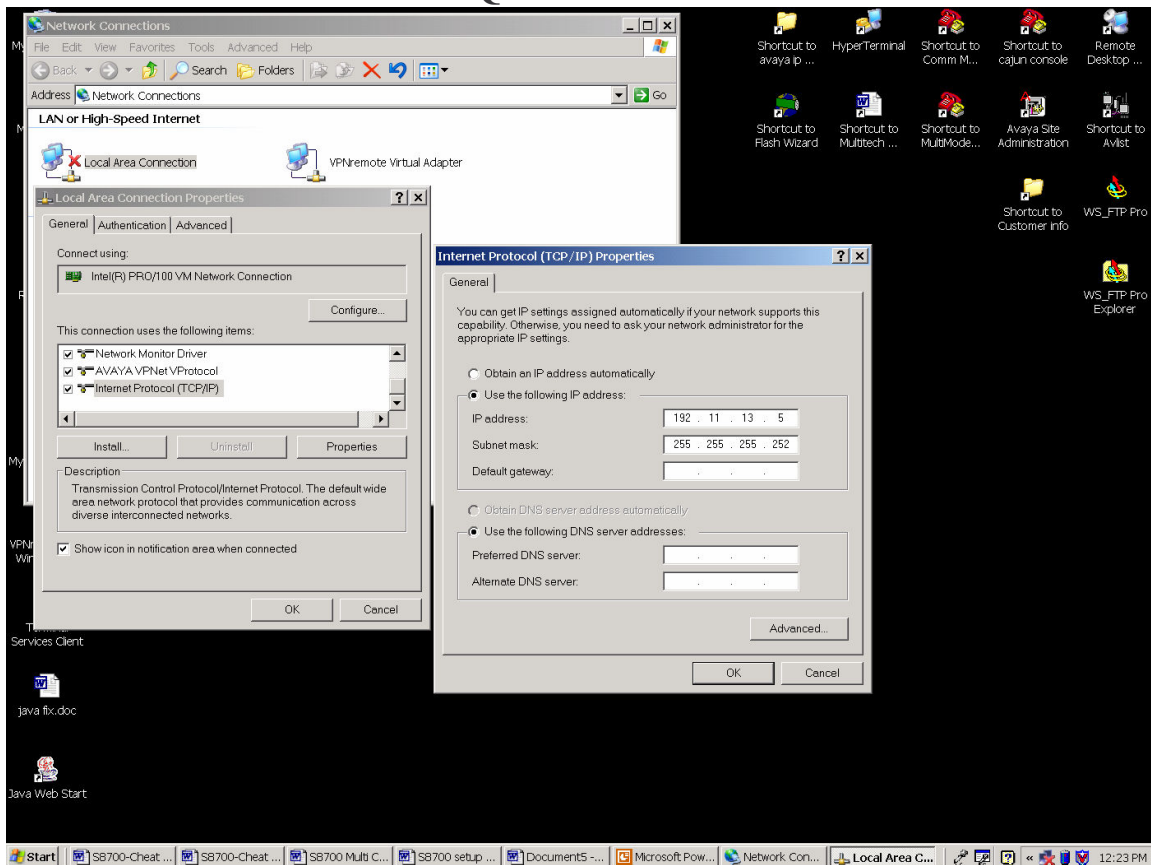


S8300 Quick Cheat sheet.



Starting with the S8300 server/LSP

1. connect laptop to the service port using 192.11.13.5 255.255.255.252 for NIC card of the laptop
2. open web browser and go to address **192.11.13.6** and login to the web interface and go to the maintenance web page
3. Reset to default... To clear any bad info in the box
4. Set time, date, and time zone, and Activate Modem for all calls
5. configure server... with the info provided by PM/customer
6. Upgrade system ... if necessary
7. upload latest patch to system
8. Install patch... See overall patch procedure doc.

Now we need to configure the G700 and all components that reside inside.

1. Configure the Cajun stack (if this box is the stack master)
 - A. connect the console port of the G700 to your Pc using special rj45 to 9pin serial adaptor to your laptop's com port
 - B. open a hyper terminal session with the settings of ... com port = 1, speed = 9600, data bits =8, parity = none, stop bits = 1, flow control = hardware
 - C. you will see welcome to Cajun enter login (`root`) return. Enter password (`root`)
 - D. at the prompt, P330-1(super)#_ change to the configure mode by typing `conf` and entering it.
 - E. Here we type... `nvram ini` --- this resets to default the Cajun stack info
 - F. You will be logged out here when it comes back up log back in and go to configure mode (steps C. and D.)
 - G. Now we see, P330-1(configure)#_ now we are ready to configure the stack
 - H. Type... `set interface inband {vlan to be used usually 1} {ip address of stack} {subnet of stack}`
 - I. At this point we are told to reset to make these setting active for the stack. So type... `reset`
 - J. You will be logged out here when it comes back up log back in and go to configure mode (steps C. and D.)
 - K. We have to set the ip route for the Cajun stack to use.
 - L. Type... `set ip route 0.0.0.0 {ip address of the gateway}`
 - M. To check your work type... `show ip route`
 - N. Cajun stack is now ready to use
2. Configure the MGP and VOIP using the Cajun CLI (command line interface)
 - A. At the prompt, P330-1(configure)#_ ... type... `session mgp`
 - B. At the new prompt MG-???-1(super)#_ ... type... `conf`
 - C. Type ... `nvram ini` --- do A. and B. then proceed to step D.
 - D. You will see prompt- MG-???-1(configure)#_ ... now we will set ip address of the mgp
 - E. Type... `set interface mgp {vlan # to be set on} {ip address} {subnet}`
 - F. System will say to use you will need to reset, **do not reset at this time.**
 - G. Type... `set interface voip {slot location of voip usually v0} {ip address}`
 - H. Now we can do a reset by typing... `reset mgp`
 - I. Here we need to enter the mgp again follow steps A and B
 - J. Now we will check our work by typing... `show interface`
 - K. If everything is correct move on to setting the ip route for the mgp
 - L. Type... `set ip route 0.0.0.0 0.0.0.0 {ip address of gateway}`
 - M. Check work by typing... `show ip route mgp`
 - N. Now we will tell the mgp how to talk to the server. We do this by setting the mgc (media gateway controller) list. A mgc can be a c-lan or s8300
 - O. Type... `set mgc list {clan or s8300 ip address}, {next clan or s8300 ip address if nessisary}`
 - P. Check work by typing... `show mgc list`

- Q. Valuable command... `show mgc` --- this will show what the active controller is that the mgp is using.
 - R. To get the serial # of the box type... `show system` – this will be needed to register in the definity software.
 - S. Now do your upgrades to the Media Modules see s8300 initial installation and upgrade.
3. Now we start Definity programming and setup
- A. Open a telnet session to the definity using ASA or ATE
 - B. Login and password
 - C. Do a `save trans` and `reset sys 4`
 - D. Login and password
 - E. The first thing we need to do is add the G700 (media-gateway)
 - F. Type... `add med {the number of the mg we are adding to the system}`
 - G. On this form we need the serial # of the g700 enter it in the *identifier* field along with the name you give it and the network region #
 - H. If you do a ... `list media` --- and it doesn't register in 5 minutes we need to check our work.
 - I. You can also `status med` to see how it is working.
 - J. Once it is registered we are ready to start normal definity programming
 - K. If you have a IA770 on this 8300... refer to IA770 document for installing procedure.